

“FALL DOWN A RABBIT HOLE, OR THROUGH THE BACK  
OF THE WARDROBE INTO OUR DREAMY GLEN”



WOODLAND  
WEDDINGS<sup>LTD</sup>



# WELCOME TO WOODLAND WEDDINGS

Lila's wood offers everything for your outdoor wedding; a private and secluded glen in which to have your blessing or humanist ceremony; a wedding breakfast set under dappled canvas with rustic tables and wooden benches arranged to suit your plans. We even run a licensed bar, and have a state of the art PA system to keep spirits high. If you don't want the day to end? then why not stay on site in the adjoining field where we can put on bell tent camping.



## ECO VENUE

We are working toward being an 'eco venue'. We do our utmost to limit our carbon footprint by using very local suppliers and staff. Guests are also encouraged to travel by coach or to lift share. We use reusable glasses and recycle all recyclable waste. To reduce the use of detergents we use bamboo biodegradable plates. We have also created a wildlife pond, and are beginning to manage the surrounding woodland. There is disabled access to the woodland, including a ground level toilet.

## YOUR PERFECT DAY

Whilst we cannot be 'wedding planners' every effort is made to make sure the day goes smoothly. We provide a coordinator to oversee the day itself and co-ordinate between your suppliers in the lead up to your big day. We will also meet with you well before the event to discuss timings, facilities, take note of your suppliers and to provide reassurance.

We can also provide creative services such as table dressing and styling, floristry, and signage.

### WHAT OUR GUESTS SAY

*"The best wedding we've ever been to... and we've been to a few"*





## LILA'S WOOD

The original concept for Lila's Wood was conceived when Faye and Sam Messenger struggled to find a wedding venue that rivalled the photos they had been seduced by on Pinterest. Never ones to be beaten, they created their own wedding venue in the woods on which Sam had played as a boy. Now called, 'Lila's wood', Woodland Weddings was born.



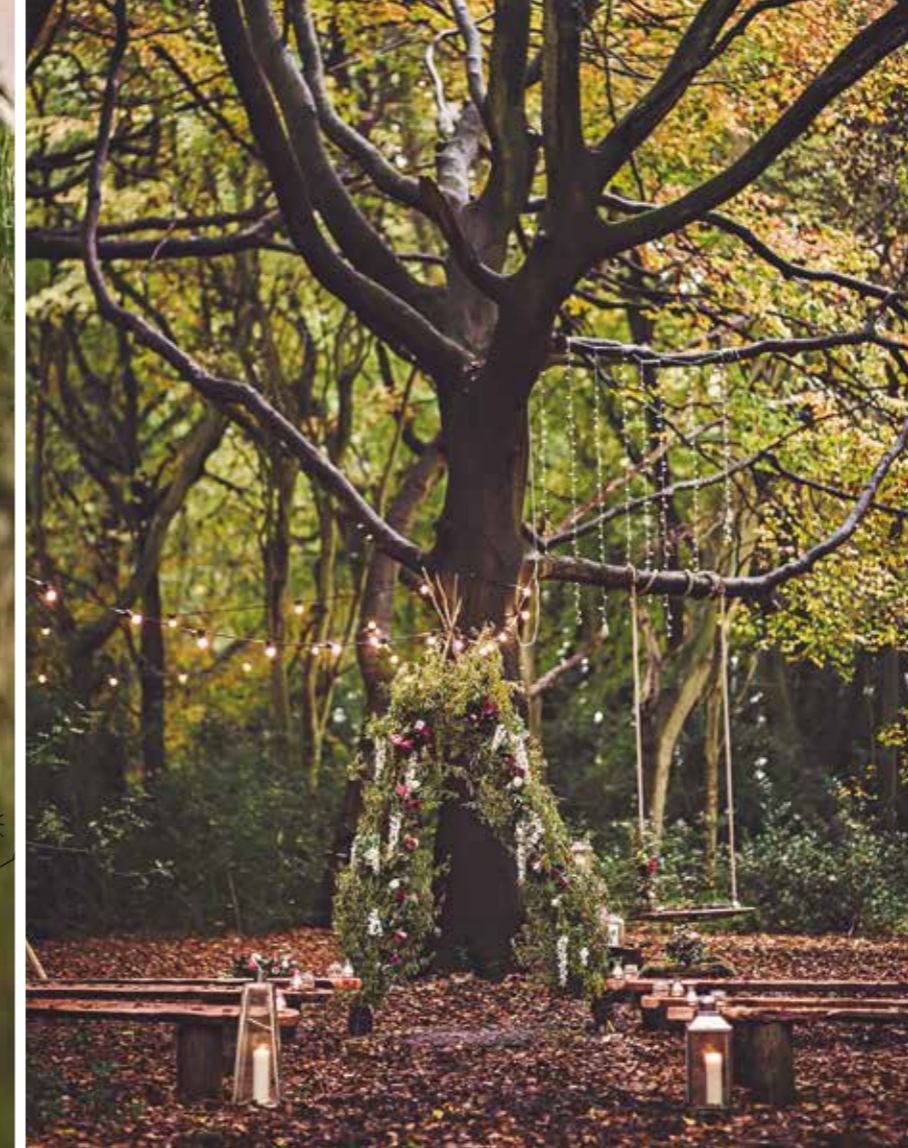
*Our nature pond – look out for toads and dragon flies*

## VENUE

"We wanted to create a venue as oppose to merely a 'dry hire' woodland space. Somewhere brides and grooms could indulge their creative, fantastical personalities and focus on the details.

So many DIY weddings become logistically painful and couples can get bogged down in the stress and tedium of hiring toilets, generators, staff, and water bowsers. (The list goes on.) We wanted to build somewhere they could enjoy titivating. We also wanted to create a space that can change week on week to produce truly unique weddings."

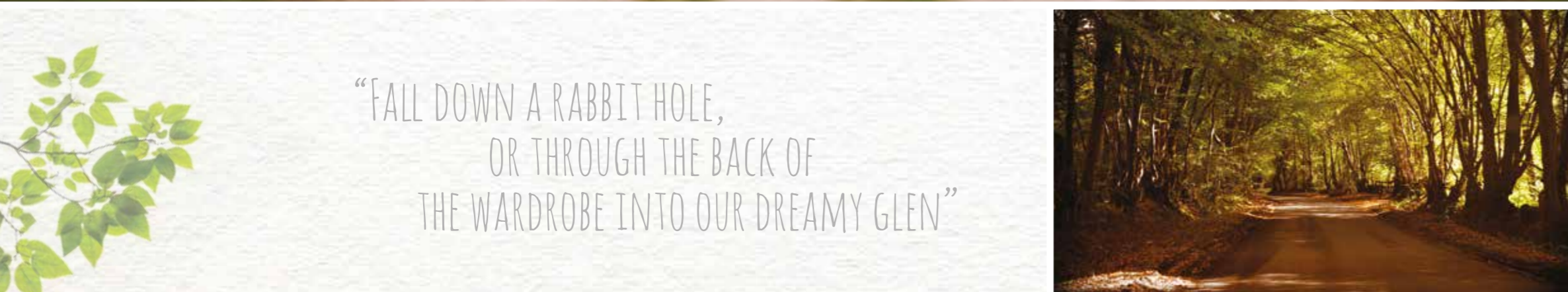




## SEEK AND YOU SHALL FIND

Lila's Wood is a secluded and private, predominantly Beech woodland planted on an ancient Beechwood site. Perfect for your exclusive outdoor event.

Just 35 minutes from London you will find yourself in a tranquil setting, decked out personally to you. Guests will be charmed by the views of open farmland and rural feel.



“FALL DOWN A RABBIT HOLE,  
OR THROUGH THE BACK OF  
THE WARDROBE INTO OUR DREAMY GLEN”

## LOCAL SUPPLIERS

Faye and Sam have a network of local suppliers. Together they aim to source services locally, thus creating low impact, sustainable weddings, and supporting a thriving rural economy. They are personally managing their woodland at

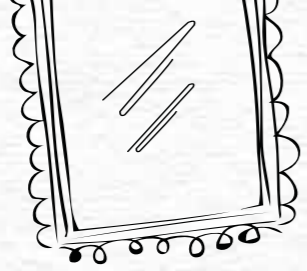
the farm to offset any ecological impact caused by events.

In an increasing effort to provide eco weddings the average distance of weekly suppliers to the business in Herts, Beds and Bucks is currently 11 miles.



## PACKAGES & SERVICES

We provide an event coordinator dedicated to managing your suppliers on the day. We also provide event staff to keep the space functioning and evolving. These efforts ensure that your guests can concentrate on enjoying themselves.



### USE OF VENUE

- Venue hire is for 1 day. Set up from 8am
- 17 meter stretch tent with coir matting, seats 120 (can be exchanged for a giant hat tipi)
- Curtain lighting across back of stretch tent/pole fairy lighting in Tipis
- 15 wooden tables and bench sets seating 6-8. 3 additional tables for cake, cards, drinks etc
- 2 x 6m chill out tents, decorated with scatter cushions. Rag rug flooring
- Power and lighting via generator, including 500m of festoon lights
- Toilet trailer block including 2 lady's toilets, 1 x men's toilet and 1 urinal
- Event staff for bar, security, parking
- PA system, sound engineer and DJ
- Caravan bar
- Use of outdoor games
- 'photo booth' hanging frames
- Contained fire pits
- General signage
- Hay bales
- Garden games
- Bunting along entrance walkway
- Polycarbonate glasses, water jugs, and stainless steel/copper wine buckets
- Disabled toilet

Not included  
Bespoke table settings, tent bunting, flowers.



### ADDITIONAL REQUIREMENTS

- Personalised blessing either in the woodland glen or tree house
- Welcome drinks
- Specialist site decor
- Wedding breakfast BBQ banquet
- Evening catering
- Bell tent village for overnight camping
- Luxury bridal suite
- 2 Kata tipi marquees, seats 130
- Additional retro caravan
- Trailer shower block
- Additional tipis for larger numbers to be seated / chill out areas

We can also be responsible for theming the venue. Here are some examples of the creative services we offer.

- Personalised chalkboards and signage
- Flowers and foliage
- Bespoke table decoration



## CEREMONIES

We have a network of humanist, independent celebrants, and ministers to conduct your service for you. Although it is important to legalise your marriage before such an event these can provide reverence to the day, as well as moments to cherish. Our officials will work with you over a series of meetings to personalise the service. It can be as traditional, bohemian, or zany as you!



“THE BEST WEDDING THAT I HAVE EVER BEEN TO.  
ABSOLUTELY LOVED THE WEDDING IN THE WOODS THEME.  
WONDERFUL, FOOD, COMPANY, MUSIC, SO RELAXED.  
IT WILL ALL STAND OUT IN MY MEMORY,  
ESPECIALLY AROUND THE CAMP FIRE DJ”



There are 18 heavy natural benches to accommodate up to 120 guests, as well as willow ceremony arches available to adorn as you wish. There are more hay bales that can be used for additional guest numbers.



## SOURCING

Sourcing of bands, photographers and entertainers can be arranged.

To make a booking please contact our wedding coordinator to check availability.

T: 01525 261999 / 07703 477007  
E: faye@woodland-weddings.com

Please visit our website for terms and conditions  
[www.woodland-weddings.com](http://www.woodland-weddings.com)



# WEDDING DAY STRETCH TENTS

At Woodland Weddings Ltd we supply the complete venue! Our selection of stretch tents are ideal for most requirements and budgets. They have a rustic, organic feel that mirrors the ethos and look of our woodland event space.

## STRETCH TENTS

Our 17 meter by 11 meter canvas look stretch tent is the most adaptable tent available. Due to its stretchy nature it has a completely freestyle structure and can be configured countless ways. We prefer to leave the front open allowing you to connect with the woodland.

We use wooden poles to mirror the natural look of our woodland surroundings and these can be arranged to a variety of shapes, making it architecturally stunning. The back of the tent is adorned with fairy lights to complete the fairy tale look.

We supply natural coconut matted flooring as standard for that hardwearing, rustic charm. Each tent comes with rustic wooden seating in the form of tables and benches (limited chairs are available upon request). Or you are free to hire in chairs.

The sides can be left open for the cool air to circulate. Stretch tents are the new and affordable alternative to hiring a traditional marquee or event tipi.

Our Belgium stretch tents are made from an extremely strong, totally waterproof and amazingly stretchy material, and yet it looks as natural as canvas.

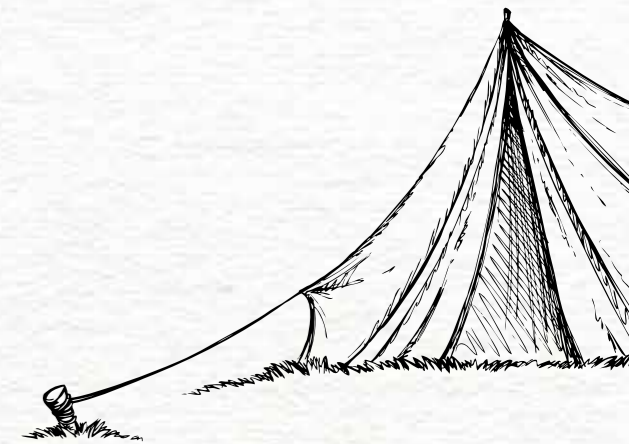
We can seat 120 comfortably under this tent so it is ideal for your wedding breakfast.



## POLES

Our tipi poles are all sustainably sourced from a Forestry Commission managed forest, the poles are from the Douglas Fir which is renowned for its durability and strength.

Our supplier lovingly hand peels, sands and linseed oil each pole to ensure they give you year after year of use.



# GIANT HAT EVENT TIPIS

There's no doubt that Giant Hat tipis look stunning at weddings. Their warm canvas looks inviting inside when the sides are down. They are also incredibly beautiful when the sides are raised, connecting them with the woodland.

## 1/2/3/4 KATA

These are a great option for both keeping your guests warm, and accommodating large numbers of guests (due to the fact that they are connectable.)

Each tent can seat 70 guests and when linked up the possibilities are endless. We are happy to supply you with prices for hire, however (due to the intricacies of putting them up) we do not supply them within the standard pricing at present.



*Giant hat tipis look stunning at weddings, raising the sides connects them with the woodland.*







## TABLE ARRANGEMENTS

Tables come as standard with benches. For a communal feel we tend to seat guests in long runs, but this is totally up to you. Please note that when using the Giant Hat Event Tipis the tables are separated by the poles so layouts are more limited.

Tables come with polycarbonate glasses, water jugs, and metal wine buckets. All other decoration is the responsibility of the bride and groom. Parties can set up the venue from 8am on the morning of the wedding, however we may not have the tent ready to be decorated until 10am.



We have around 16 chairs available for elderly guests, children, disabled persons, and those who just like a seat with a back! These must be positioned at the end of a table. We also have 3 high chairs available.

Why not make things really simple? We have many props available for hire. Quotes can also be provided for floristry and signage.

We also have 3 tables available for cakes, gifts and cards.



## CHILL OUT TENTS

Our tipi supplier follows a traditional Sioux design and yet the tipis are handmade at a workshop in West Cornwall. The outer canvas is made of 12 and 15oz canvas duck. The canvas is all water, rot and fire resistant meaning your tipi will keep you dry on a wet day, snug on a cold day and lovely and cool on a warm day.

### 6 METER TIPIS

These intimate tipis are perfect for chilling with your guests, seated on scatter cushions. Alternatively, they can be decked out to a theme of your choice. Why not have a tipi photo booth? Creche? or games room? We've even had a Chinese tea ceremony in one!



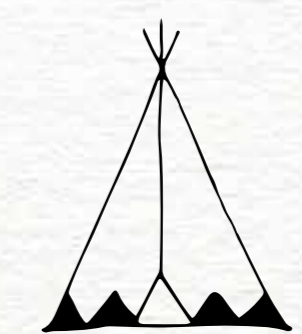
*These intimate tipis are perfect for chilling with your guests, seated on scatter cushions around a camp fire.*

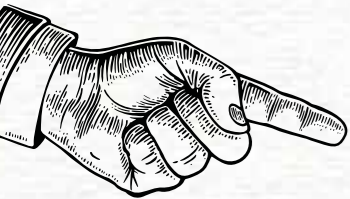


## OVERNIGHT BELL TENTS AND HONEYBELL

The 4 and 5 meter bell tents / tipis are not supplied with the venue as standard. However, using our Hertfordshire suppliers we can set up a bell tent village to create a festival atmosphere at your wedding. Tents come with camp beds and are decorated with flags, fairy lights and bunting as standard. Sumptuously furnished tents with real beds and mattresses are also available upon request. We can even decorate your own canvas 'honey-bell'.

*At an extra cost you can even have hot showers laid on, and a local coffee and pastry van can visit in the morning.*





## BAR & CATERING

We provide an events licence for each event meaning that all alcohol must be purchased through the bar. Please note we never allow guests to provide their own drinks or consume drinks in their tents. Corkage charges and limits apply to table wine and champagne.

Prices can be provided to feed up to 200 people. Options include; BBQ banquets, hog roasts, cheese towers, paellas and tagines.



### ALTERNATIVE SOLUTIONS

If you prefer a different style of catering then we can point you in the direction of specialist local outdoor caterers. Alternatively, you are free to source your own caterers. NB: Please note that external caterers must provide food hygiene registration certificates and be able to cater in an outdoor setting.

Guests will be tickled by our converted retro caravans from which we serve an extensive range of chilled drinks.



WHAT OUR GUESTS SAY  
*"such a lot of thoughtful planning and hard work went into creating this fabulous day in a wonderful setting"*





## ENTERTAINMENT & EVENING

As an outside venue this is not the place for you if you want to play loud music throughout the night. We provide a PA System, sound engineer, and in-house DJ. Bands are welcomed to plug into our PA system and to play until 11pm. We do not permit any music after 11pm.



AS DUSK FALLS  
THE VENUE STEPS  
UP A NOTCH



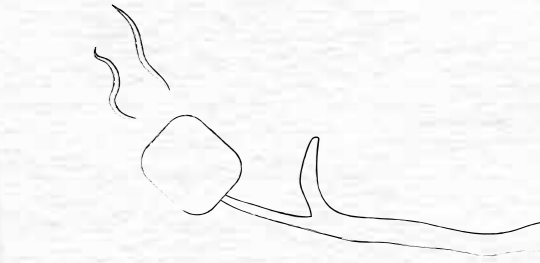
WHAT OUR GUESTS SAY  
*"What an amazing day. The most magical and unique wedding reception we have ever been to"*



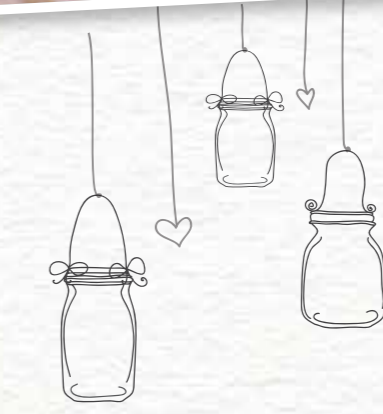


## LIGHTING

As night falls the venue steps up a notch as hundreds of festoon lights begin to twinkle guiding guests through the central part of the woodland.



*Tired partygoers warm themselves around fire pits with marshmallows for toasting!*



## CREDITS

Matthew Bishop Photography - Matt

[www.mbishopphotography.co.uk](http://www.mbishopphotography.co.uk)

07851 131895

[info@mbishopphotography.co.uk](mailto:info@mbishopphotography.co.uk)

Bohemian Weddings - Michael and Andrea Leather

[www.bohemianweddings.co.uk](http://www.bohemianweddings.co.uk)

[bohemianweddingsuk@gmail.com](mailto:bohemianweddingsuk@gmail.com)

07961 697500

Jason Mark Harris

[www.jasonmarkharris.com](http://www.jasonmarkharris.com)

[jasonmarkharrisphoto@gmail.com](mailto:jasonmarkharrisphoto@gmail.com)

Dylan Nolte Photography - Dylan

[www.dylannoltephotography.com](http://www.dylannoltephotography.com)

07867 485967

[Dylan.nolte.bookings@gmail.com](mailto:Dylan.nolte.bookings@gmail.com)

Epic Love Story - Emma

[www.epiclovestory.co.uk](http://www.epiclovestory.co.uk)

[emma@epiclovestory.co.uk](mailto:emma@epiclovestory.co.uk)

Esme Robinson

[www.esmerobinson.com](http://www.esmerobinson.com)

01767 699217

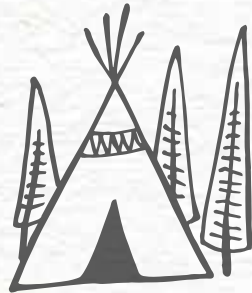
[Info@esmerobinson.com](mailto:Info@esmerobinson.com)

Chris Barber Photography

[www.chrisbarberphotography.co.uk](http://www.chrisbarberphotography.co.uk)

[studio@chrisbarberphotography.co.uk](mailto:studio@chrisbarberphotography.co.uk)





WOODLAND  
WEDDINGS<sup>LTD</sup>

### REGISTERED ADDRESS

Hartfield Cottage  
Watling Street  
Little Brickhill  
Bucks  
MK17 9LX

### WOODLAND LOCATION

Lila's Wood  
Wick Road  
Hastoe, Tring  
Herts  
HP23 6LU

### CONTACT

T: 01525 261999  
M: 07703 477007  
E: [faye@woodland-weddings.com](mailto:faye@woodland-weddings.com)  
W: [woodland-weddings.com](http://woodland-weddings.com)